

Laboratory Weighing

Balances, Portable Scales
& Moisture Analyzers
2022

Overview

On the following pages you will find an overview of the laboratory weighing balances including NTEP and intrinsically safe models, moisture analyzers and viscometers.

Warranty and Support

All balances listed in this catalog are backed by our industry leading 5 year warranty with the only exceptions being the EK-AEP Intrinsically Safe balance and viscometers (2 years).

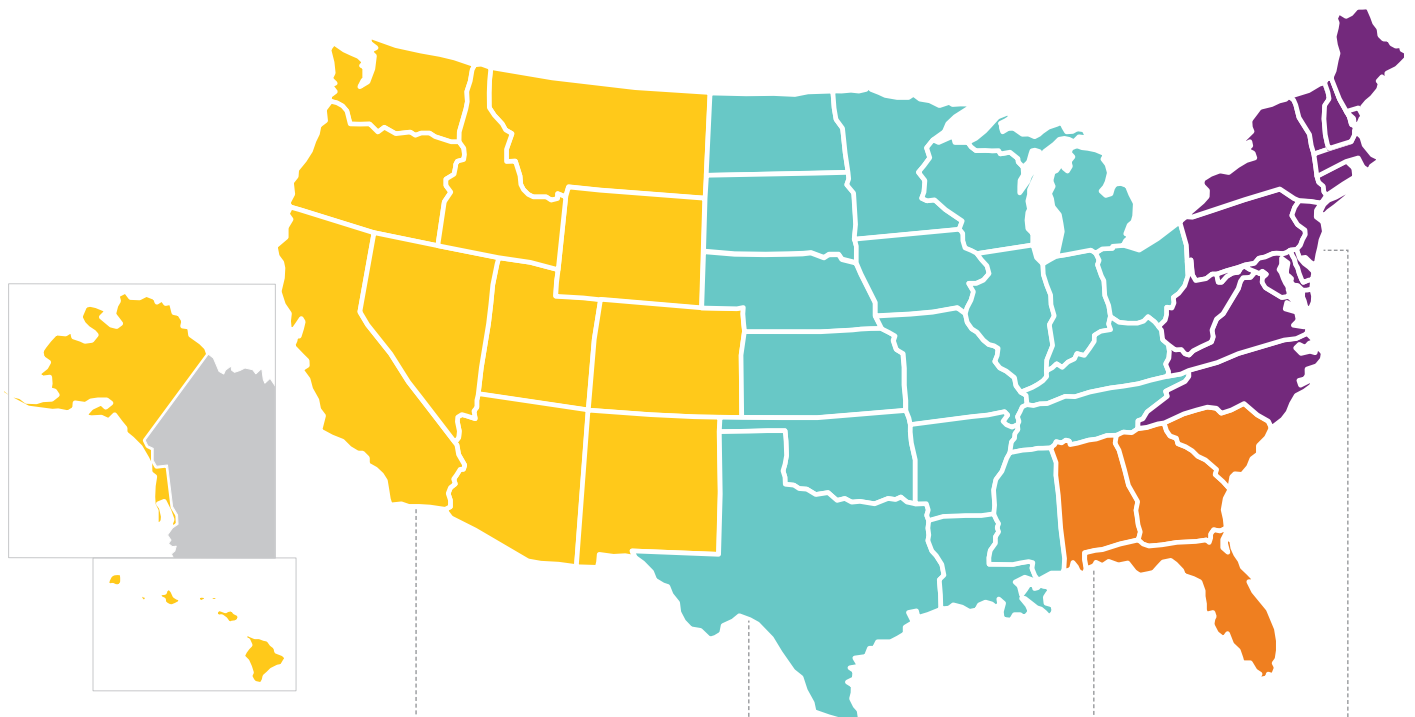
A&D products are serviced and supported by both A&D and our extensive network of weighing partners who assist with:

- Post sales service and support
- On-site setup and calibration

Contents

Micro and Semi-Micro Balances	03
Semi-Micro and Analytical Balances	05
Analytical Balances	06
Milligram and Toploader Precision Balances including NTEP models	09
Portables and Compact Balances	13
Balance Accessories	15
High Capacity Balances	16
Moisture Analyzers	18
Viscometers	19
Pipette and Leak Testers	19

Sales Contacts by Region



Roy Firmager

408-518-5147
rfirmager@andonline.com

- National Accounts

Jesus Zapien

408-564-2322
jzapien@andonline.com

- WA, OR, ID, WY, MT
- CA, NV, UT, CO
- AZ, NM, AK, HI

Jon Gill

440-903-6652
jgill@andonline.com

- ND, SD, MN, WI, IA, NE
- MI, IL, IN, OH, AK, KY
- KS, OK, TX, MS, LA, TN

Maurice Bendeck

408-391-8279
mbendeck@andonline.com

- FL, GA, SC, AL
- Mexico / LATAM

Joe Martin

413-593-5602
jmartin@andonline.com

- ME, VT, NH, MA, RI
- CT, NY, DE, MD, NJ
- PA, WV, VA, NC, DC
- Canada

Micro and Semi Micro Balances



Premium

Borealis BA Series

- Internal calibration with auto-self calibration feature to adjust for temperature variations ensuring consistent measurements.
- 5" color touch screen display makes operation a breeze.
- Automatic doors controlled by IR sensors allow for smooth and efficient access to the weighing chamber.
- Standard with External ionizer to eliminate errors due to static electricity.
- Standard Bluetooth, RS232, USB-A, USB-B and Ethernet communications allow for easy system integration.
- Industry leading 5-year A&D warranty.

Part Number	Description	Pan Size
BA-6TE	6.2 g x 0.001 mg with touch screen display, external ionizer and automatic doors	Ø 0.98"
BA-6TDE	2.1 g / 6.2 g x 0.001 mg / 0.01 mg with touch screen display, external ionizer and automatic doors	Ø 0.98"
BA-225TE	220 g x 0.01 mg with touch screen display, external ionizer and automatic doors	Ø 0.98"
BA-225DTE	51 g / 220 g x 0.01 mg / 0.1 mg with touch screen display, external ionizer and automatic doors	Ø 0.98"
BA-125DTE	51 g / 120 g x 0.01 mg / 0.1 mg with touch screen display, external ionizer and automatic doors	Ø 3.54"

Micro and Semi Micro Balances



Advanced Ion BM Series

- Standard AD-1688 USB data acquisition tool for recording weighing data and environmental parameters, exportable data.
- Internal calibration with Auto-Self Calibration feature to adjust for temperature variations.
- Built-in temperature, humidity, and atmospheric pressure sensors, built-in fan-less ionizer.
- Industry leading 5-year A&D warranty.

Part Number	Description	Calibration Type	Pan Size
BM-5	5.2 g x 0.001 mg Micro Balance with RS-232C	Internal (ASC)	Ø 0.98"
BM-5D	2.1 g / 5.2 g x 0.001 mg / 0.01 mg Micro Balance with RS-232C	Internal (ASC)	Ø 0.98"
BM-20	22 g x 0.001 mg Micro Balance with RS-232C	Internal (ASC)	Ø 0.98"
BM-22	5.2 g / 22 g x 0.001 mg / 0.01 mg Micro Balance with RS-232C	Internal (ASC)	Ø 0.98"
BM-252	250 g x 0.01 mg Semi-micro Balance with RS-232C	Internal (ASC)	Ø 3.54"
BM-200	220 g x 0.1 mg Analytical Balance with RS-232C	Internal (ASC)	Ø 3.54"
BM-300	320 g x 0.1 mg Analytical Balance with RS-232C	Internal (ASC)	Ø 3.54"
BM-500	520 g x 0.1 mg Analytical Balance with RS-232C	Internal (ASC)	Ø 3.54"

Semi-Micro and Analytical Balances



Classic Phoenix GH Series

- Classic Ordinal Electromagnetic Sensor technology provides excellent accuracy and precision.
- One-Touch automatic self-calibration with one push of the CAL key.
- Automatic adjustable environment settings.
- GLP, GMP and ISO compliant, data memory function.
- Anti-static glass, RS-232C and auto power feature.
- Industry leading 5-year A&D warranty.

Part Number	Description	Calibration Type	Pan Size
GH-120	120 g x 0.1 mg with RS-232C	Internal	Ø 3.6"
GH-200	220 g x 0.1 mg with RS-232C	Internal	Ø 3.6"
GH-300	320 g x 0.1 mg with RS-232C	Internal	Ø 3.6"
GH-202	220 / 51 g x 0.1 / 0.01 mg Semi-micro with RS-232C	Internal	Ø 3.6"
GH-252	250 / 101 g x 0.1 / 0.01 mg Semi-micro with RS-232C	Internal	Ø 3.6"



Traditional Gemini GR Series

- Fully automatic self-calibration with one push of the CAL key.
- Automatic adjustable environmental settings.
- GLP compliant, large memory for weighing data.
- Easy access doors with front lever for quick access to weighing chamber.
- Weigh below balance feature.
- Industry leading 5-year A&D warranty.

Part Number	Description	Calibration Type	Pan Size
GR-120	120 g x 0.1 mg with RS-232C	Internal	Ø 3.3"
GR-200	210 g x 0.1 mg with RS-232C	Internal	Ø 3.3"
GR-300	310 g x 0.1 mg with RS-232C	Internal	Ø 3.3"
GR-202	42 g / 210 g x 0.01 mg / 0.1 mg Semi-micro w/ RS-232C	Internal	Ø 3.3"

Analytical Balances



Advanced

Apollo GX-AE Series

- One-Touch internal calibration with Built-in Fan-less Ionizer.
- Advanced Weighing Technology Smart SHS weighing for faster performance.
- Solid construction: Full metal housing, Impact Shock Detection/overload protection, easy leveling with large LED illuminated level and large thumbwheel adjustment.
- Multi-functional Connectivity: USB & RS232 (9 pin) - Bluetooth accessory.
- Full GLP compliance, password protection, keylock, UFC for label printing.
- Industry leading 5-year A&D warranty.

Part Number	Description	Calibration Type	Pan Size
GX-124AE	120 g x 0.1 mg w/ USB & RS-232C, built-in static eliminator	Internal (ASC)	Ø 3.6"
GX-224AE	220 g x 0.1 mg w/ USB & RS-232C, built-in static eliminator	Internal (ASC)	Ø 3.6"
GX-324AE	320 g x 0.1 mg w/ USB & RS-232C, built-in static eliminator	Internal (ASC)	Ø 3.6"

Advanced

Apollo GX-A Series

- One-Touch internal calibration. Advanced Smart SHS weighing for faster performance.
- Solid construction: Full metal housing, Impact Shock Detection/overload protection, easy leveling with large LED illuminated level and large thumbwheel adjustment.
- Multi-functional Connectivity: USB & RS232 (9 pin) - Bluetooth accessory.
- Full GLP compliance, password protection, keylock, UFC for label printing.
- Industry leading 5-year A&D warranty.

Part Number	Description	Calibration Type	Pan Size
GX-124A	120 g x 0.1 mg w/ USB & RS-232C	Internal (ASC)	Ø 3.6"
GX-224A	220 g x 0.1 mg w/ USB & RS-232C	Internal (ASC)	Ø 3.6"
GX-324A	320 g x 0.1 mg w/ USB & RS-232C	Internal (ASC)	Ø 3.6"

Analytical Balances



Advanced Apollo GF-A Series

- External calibration. Advanced Smart SHS weighing for faster performance.
- Solid construction: Full metal housing, Impact Shock Detection/overload protection, easy leveling with large LED illuminated level and large thumbwheel adjustment.
- Multi-functional Connectivity: USB & RS232 (9 pin) - Bluetooth accessory.
- Full GLP compliance, password protection, keylock, UFC for label printing.
- Industry leading 5-year A&D warranty.

Part Number	Description	Calibration Type	Pan Size
GF-124A	120 g x 0.1 mg w/ USB & RS-232C	External	Ø 3.6"
GF-224A	220 g x 0.1 mg w/ USB & RS-232C	External	Ø 3.6"
GF-324A	320 g x 0.1 mg w/ USB & RS-232C	External	Ø 3.6"

Calibration Weight Sets

Calibration weights for manufacturing and laboratory weighing equipment. To maintain your weighing device accuracy and for Legal for Trade applications, it is important to use a reliable and certified test weight.

- Calibration Class I and II balance in accordance to Handbook 44
- Suitable for student laboratory use, rough weighing operations
- Tolerance testing and verification checks
- Calibration shift test & calibration adjustment
- Sensitivity testing



Analytical Balances



Standard Galaxy HR-AZ Series

- Internal calibration at the touch of a button.
- Robust construction, fast compact SHS Sensor with 2 second response time (approx.).
- Large breeze break with rotary sliding doors saves bench space.
- Reverse backlit LCD display for easy to read weighing results.
- Standard RS-232C, optional Plug & play connectivity with Quick USB interface.
- Industry leading 5-year A&D warranty.

Part Number	Description	Calibration Type	Pan Size
HR-100AZ	102 g x 0.1 mg with RS-232C	Internal	Ø 3.6"
HR-150AZ	152 g x 0.1 mg with RS-232C	Internal	Ø 3.6"
HR-250AZ	252 g x 0.1 mg with RS-232C	Internal	Ø 3.6"



Standard Galaxy HR-A Series

- External calibration. Robust construction, fast compact SHS with 2 second response time.
- Large breeze break with rotary sliding doors saves bench space.
- Reverse backlit LCD display for easy to read weighing results.
- Standard RS-232C, optional Plug & play connectivity with Quick USB interface.
- Industry leading 5-year A&D warranty.

Part Number	Description	Calibration Type	Pan Size
HR-100A	102 g x 0.1 mg with RS-232C	External	Ø 3.6"
HR-150A	152 g x 0.1 mg with RS-232C	External	Ø 3.6"
HR-250A	252 g x 0.1 mg with RS-232C	External	Ø 3.6"

Milligram and Toploader Precision Balances



Advanced

Apollo GX-A and GX-AN NTEP models

- One-Touch internal calibration. Advanced Smart SHS weighing for faster performance.
- Solid construction: Full metal housing, Impact Shock Detection/overload protection, easy leveling with large LED illuminated level and large thumbwheel adjustment.
- Multi-functional connectivity with USB & RS232 (9 pin), Bluetooth accessory available.
- Full GLP compliance, password protection, keylock, UFC for label printing.
- Industry leading 5-year A&D warranty.
- Trade Legal Models: NTEP CoC 21-045 (shown in red).

Part Number	Description	Calibration Type	Pan Size
GX-203A	220 g x 0.001 g with Breeze Break (3.6" high)	Internal (ASC)	5.0" x 5.0"
GX-303A	320 g x 0.001 g with Breeze Break (3.6" high)	Internal (ASC)	5.0" x 5.0"
GX-403A	420 g x 0.001 g with Breeze Break (3.6" high)	Internal (ASC)	5.0" x 5.0"
GX-603A	620 g x 0.001 g with Breeze Break (3.6" high)	Internal (ASC)	5.0" x 5.0"
GX-1003A	1100 g x 0.001 g with Breeze Break (3.6" high)	Internal (ASC)	5.0" x 5.0"
GX-1603A	1620 g x 0.001 g with Breeze Break (3.6" high)	Internal (ASC)	5.0" x 5.0"
GX-2002A	2200 g x 0.01 g	Internal (ASC)	6.5" x 6.5"
GX-3002A	3200 g x 0.01 g	Internal (ASC)	6.5" x 6.5"
GX-4002A	4200 g x 0.01 g	Internal (ASC)	6.5" x 6.5"
GX-6002A	6200 g x 0.01 g	Internal (ASC)	6.5" x 6.5"
GX-10002A	10200 g x 0.01 g	Internal (ASC)	6.5" x 6.5"
GX-6001A	6200 g x 0.1 g	Internal (ASC)	6.5" x 6.5"
GX-10001A	10200 g x 0.1 g	Internal (ASC)	6.5" x 6.5"
GX-203AN	220 g x 0.001 g with Breeze Break (3.6" high), NTEP Class II, e = 0.01 g	Internal (ASC)	5.0" x 5.0"
GX-303AN	320 g x 0.001 g with Breeze Break (3.6" high), NTEP Class II, e = 0.01 g	Internal (ASC)	5.0" x 5.0"
GX-403AN	420 g x 0.001 g with Breeze Break (3.6" high), NTEP Class II, e = 0.01 g	Internal (ASC)	5.0" x 5.0"
GX-603AN	620 g x 0.001 g with Breeze Break (3.6" high), NTEP Class II, e = 0.01 g	Internal (ASC)	5.0" x 5.0"
GX-2002AN	2200 g x 0.01 g, NTEP Class II, e = 0.1 g	Internal (ASC)	6.5" x 6.5"
GX-3002AN	3200 g x 0.01 g, NTEP Class II, e = 0.1 g	Internal (ASC)	6.5" x 6.5"
GX-4002AN	4200 g x 0.01 g, NTEP Class II, e = 0.1 g	Internal (ASC)	6.5" x 6.5"
GX-6002AN	6200 g x 0.01 g, NTEP Class II, e = 0.1 g	Internal (ASC)	6.5" x 6.5"
GX-10001AN	10200 g x 0.1 g, NTEP Class II, e = 1 g	Internal (ASC)	6.5" x 6.5"

Successor to GX Series

Milligram and Toploader Precision Balances



Advanced

Apollo GF-A Series and GF-AN NTEP and MC Models

- External calibration. Advanced Smart SHS weighing for faster performance.
- Solid construction: Full metal housing, Impact Shock Detection/overload protection, easy leveling with large LED illuminated level and large thumbwheel adjustment.
- Multi-functional connectivity with USB & RS232 (9 pin), Bluetooth accessory available.
- Full GLP compliance, password protection, keylock, UFC for label printing.
- Industry leading 5-year A&D warranty.
- Trade Legal models: US NTEP Coc 20-039A1, MC CoC AM-6158 (shown in red).

Part Number	Description	Calibration Type	Pan Size
GF-123A	120 g x 0.001 g with Breeze Break (3.6" high)	External	5.0" x 5.0"
GF-203A	220 g x 0.001 g with Breeze Break (3.6" high)	External	5.0" x 5.0"
GF-303A	320 g x 0.001 g with Breeze Break (3.6" high)	External	5.0" x 5.0"
GF-403A	420 g x 0.001 g with Breeze Break (3.6" high)	External	5.0" x 5.0"
GF-603A	620 g x 0.001 g with Breeze Break (3.6" high)	External	5.0" x 5.0"
GF-1003A	1103 g x 0.001 g with Breeze Break (3.6" high)	External	5.0" x 5.0"
GF-1603A	1603 g x 0.001 g with Breeze Break (3.6" high)	External	5.0" x 5.0"
GF-1202A	1220 g x 0.01 g	External	6.5" x 6.5"
GF-2002A	2200 g x 0.01 g	External	6.5" x 6.5"
GF-3002A	3200 g x 0.01 g	External	6.5" x 6.5"
GF-4002A	4200 g x 0.01 g	External	6.5" x 6.5"
GF-6002A	6200 g x 0.01 g	External	6.5" x 6.5"
GF-10002A	10200 g x 0.01 g	External	6.5" x 6.5"
GF-6001A	6100 g x 0.1 g	External	6.5" x 6.5"
GF-10001A	10200 g x 0.1 g	External	6.5" x 6.5"
GF-123AN	120 g x 0.001 g with Breeze Break (3.6" high), NTEP/MC Class II, e = 0.01 g	External	5.0" x 5.0"
GF-203AN	220 g x 0.001 g with Breeze Break (3.6" high), NTEP/MC Class II, e = 0.01 g	External	5.0" x 5.0"
GF-303AN	320 g x 0.001 g with Breeze Break (3.6" high), NTEP/MC Class II, e = 0.01 g	External	5.0" x 5.0"
GF-403AN	420 g x 0.001 g with Breeze Break (3.6" high), NTEP/MC Class II, e = 0.01 g	External	5.0" x 5.0"
GF-603AN	620 g x 0.001 g with Breeze Break (3.6" high), NTEP/MC Class II, e = 0.01 g	External	5.0" x 5.0"
GF-1202AN	1220 g x 0.01 g, NTEP/MC Class II, e = 0.1 g	External	6.5" x 6.5"
GF-2002AN	2200 g x 0.01 g, NTEP/MC Class II, e = 0.1 g	External	6.5" x 6.5"
GF-3002AN	3200 g x 0.01 g, NTEP/MC Class II, e = 0.1 g	External	6.5" x 6.5"
GF-4002AN	4200 g x 0.01 g, NTEP/MC Class II, e = 0.1 g	External	6.5" x 6.5"
GF-6002AN	6200 g x 0.01 g, NTEP/MC Class II, e = 0.1 g	External	6.5" x 6.5"
GF-6001AN	6100 g x 0.1 g, NTEP/MC Class II, e = 1 g	External	6.5" x 6.5"
GF-10001AN	10200 g x 0.1 g, NTEP/MC Class II, e = 1 g	External	6.5" x 6.5"

Milligram and Toploader Precision Balances



Standard FZ-i Series

- Internal calibration, fast compact SHS weighing sensor, 1-second response time. Easy to read VFD Display.
- Standard RS-232C, Quick USB interface – no driver installation required (optional), Ethernet interface with WinCT-Plus software (optional).
- Added protection with Shock absorber function.
- Industry leading 5-year A&D warranty.

Part Number	Description	Calibration Type	Pan Size
FZ-120i	122 g x 0.001 g with Breeze Break (3.4" high)	Internal	Ø 5.12"
FZ-200i	220 g x 0.001 g with Breeze Break (3.4" high)	Internal	Ø 5.12"
FZ-300i	320 g x 0.001 g with Breeze Break (3.4" high)	Internal	Ø 5.12"
FZ-500i	520 g x 0.001 g with Breeze Break (3.4" high)	Internal	Ø 5.12"
FZ-1200i	1220 g x 0.01 g	Internal	Ø 5.91"
FZ-2000i	2200 g x 0.01 g	Internal	Ø 5.91"
FZ-3000i	3200 g x 0.01 g	Internal	Ø 5.91"
FZ-5000i	5200 g x 0.01 g	Internal	Ø 5.91"

Standard FZ-iWP Series

- Internal calibration, IP65 water and dust protection, fast compact SHS weighing sensor, 1-second response time. Easy to read VFD Display.
- Standard RS-232C, Quick USB interface – no driver installation required (optional), Ethernet interface with WinCT-Plus software (optional).
- Added protection with Shock absorber function.
- Industry leading 5-year A&D warranty.

Part Number	Description	Calibration Type	Pan Size
FZ-120iWP	122 g x 0.001 g with Breeze Break (3.4" high)	Internal	Ø 5.12"
FZ-200iWP	220 g x 0.001 g with Breeze Break (3.4" high)	Internal	Ø 5.12"
FZ-300iWP	320 g x 0.001 g with Breeze Break (3.4" high)	Internal	Ø 5.12"
FZ-1200iWP	1220 g x 0.01 g	Internal	Ø 5.91"
FZ-2000iWP	2200 g x 0.01 g	Internal	Ø 5.91"
FZ-3000iWP	3200 g x 0.01 g	Internal	Ø 5.91"

Milligram and Toploader Precision Balances



Standard FX-i Series FX-iN/NC NTEP and MC Models

- External calibration, fast compact SHS weighing sensor, 1-second response time. Easy to read VFD Display.
- Standard RS-232C, Quick USB interface – no driver installation required (optional), Ethernet interface with WinCT-Plus software (optional).
- Added protection with Shock absorber function.
- Industry leading 5-year A&D warranty.
- N models are NTEP approved (us) and NC models are Measurement Canada approved Class II CC# 08-045A3, AM-5692 (NTEP in Red, MC in Green).

Part Number	Description	Calibration Type	Pan Size
FX-120i	122 g x 0.001 g with Breeze Break (3.4" high)	External	Ø 5.12"
FX-200i	220 g x 0.001 g with Breeze Break (3.4" high)	External	Ø 5.12"
FX-300i	320 g x 0.001 g with Breeze Break (3.4" high)	External	Ø 5.12"
FX-500i	520 g x 0.001 g with Breeze Break (3.4" high)	External	Ø 5.12"
FX-1200i	1220 g x 0.01 g	External	Ø 5.91"
FX-2000i	2200 g x 0.01 g	External	Ø 5.91"
FX-3000i	3200 g x 0.01 g	External	Ø 5.91"
FX-5000i	5200 g x 0.01 g	External	Ø 5.91"
FX-120iN	122 g x 0.001 g with Breeze Break (3.4" high) NTEP e=d = 0.01 g OR e=10d 0.001 g	External	Ø 5.12"
FX-120iNC	122 g x 0.001 g with Breeze Break (3.4" high) MC e = 0.01 g	External	Ø 5.12"
FX-200iN	220 g x 0.001 g with Breeze Break (3.4" high) NTEP e=d = 0.01 g OR e=10d 0.001 g	External	Ø 5.12"
FX-200iNC	220 g x 0.001 g with Breeze Break (3.4" high) MC e = 0.01 g	External	Ø 5.12"
FX-300iN	320 g x 0.001 g with Breeze Break (3.4" high) NTEP e=d = 0.01 g OR e=10d 0.001 g	External	Ø 5.12"
FX-300iNC	320 g x 0.001 g with Breeze Break (3.4" high) MC e = 0.01 g	External	Ø 5.12"
FX-1200iN	1220 g x 0.01 g NTEP e=d = 0.1 g OR e=10d 0.01 g	External	Ø 5.91"
FX-1200iNC	1220 g x 0.01 g MC e = 0.1 g	External	Ø 5.91"
FX-2000iN	2200 g x 0.01 g NTEP e=d = 0.1 g OR e=10d 0.01 g	External	Ø 5.91"
FX-2000iNC	2200 g x 0.01 g MC e = 0.1 g	External	Ø 5.91"
FX-3000iN	3200 g x 0.01 g NTEP e=d = 0.1 g OR e=10d 0.01 g	External	Ø 5.91"
FX-3000iNC	3200 g x 0.01 g MC e = 0.1 g	External	Ø 5.91"

Note: Models with "N" suffix are NTEP listed. Models FX- iNC are Measurement Canada approved and display "g" only.

Portables and Compact Balances



EJ-123



EJ-3002



EJ-54D2

Entry

Newton EJ Series

- Fast response time, bright backlit LCD display, external calibration.
- Application modes include counting, percent weighing, accumulation function. GLP compliant.
- Security slot at the back for wire-locking to prevent theft, stackable body to save storage space.
- Power supply: AC adapter or 4 AA size dry batteries (batteries are not included).
- Industry leading 5-year A&D warranty.

Part Number	Description	Calibration Type	Pan Size
EJ-54D2	22/52 g x 0.0002/0.001 g	External	Ø 1.96"
EJ-123	120 g x 0.001 g	External	Ø 4.3"
EJ-303	320 g x 0.001 g	External	Ø 4.3"
EJ-120	120 g x 0.01 g	External	Ø 4.3"
EJ-200	210 g x 0.01 g	External	Ø 4.3"
EJ-300	310 g x 0.1 g	External	Ø 4.3"
EJ-410	410 g x 0.1 g	External	Ø 4.3"
EJ-610	610 g x 0.01 g	External	Ø 4.3"
EJ-1202	1200 g x 0.01 g	External	5" x 5.5"
EJ-3002	3100 g x 0.01 g	External	5" x 5.5"
EJ-1500	1500 g x 0.1 g	External	5" x 5.5"
EJ-2000	2100 g x 0.1 g	External	5" x 5.5"
EJ-3000	3100 g x 0.1 g	External	5" x 5.5"
EJ-4100	4100 g x 0.1 g	External	5" x 5.5"
EJ-6100	6100 g x 0.1 g	External	5" x 5.5"

Portables and Compact Balances



EK-AEP Series Intrinsically Safe Compact Balances

- Conforms to: IECEx: Ex ia op is IIB T3 Ga ATEX: II 1G Ex ia op is IIB T3 Ga FM/FMc (NEC505): Class I, Zone 0, AEx/Ex ia op is IIB T3 FM/FMc (NEC500): IS / I / 1 / C, D / T3C Tamb -25 to +40°C.
- Battery operation with up to 250 hours for portability, requires no external power supply.
- Stainless steel weighing pan, easy-to-read bright LCD display with backlight, external calibration.
- Application modes include counting, percent weighing, checking sample variation Hi/Low comparator function for fast and accurate filling, packing, sorting. Multiple weighing units.
- Options for intrinsically safe communication beyond hazardous area.
- Industry leading 5-year A&D warranty.

Part Number	Description	Calibration Type	Pan Size
EK-300AEP	300 x 0.01g Intrinsically Safe BALANCE	External	Ø 4.3"
EK-3000AEP	3000 x 0.1g Intrinsically Safe BALANCE	External	5.2" x 6.7"
EK-12KAEP	12 kg x 0.001 kg Intrinsically Safe BALANCE	External	5.2" x 6.7"

EK-i Series with NTEP M0odels

- Compact design with metal base housing, overload protection, and large backlit LCD display.
- NTEP Legal for Trade models available.
- Application modes include Hi/Low comparator function, counting, percent weighing, and 9 weighing units. GLP compliant.
- Industry leading 5-year A&D warranty.
- Trade legal models: NTEP CoC 04-019A1 (shown in red).

Part Number	Description	Calibration Type	Pan Size
EK-120i	120 g x 0.01 g	External	Ø 4.3"
EK-200i	200 g x 0.01 g	External	Ø 4.3"
EK-300i	300 g x 0.01 g	External	Ø 4.3"
EK-410i	400 g x 0.01 g	External	Ø 4.3"
EK-610i	600 g x 0.01 g	External	Ø 4.3"
EK-600i	600 g x 0.1 g NTEP Class III D= 0.1 g	External	5.2" x 6.7"
EK-1200i	1200 g x 0.1 g NTEP Class II D=0.1 g	External	5.2" x 6.7"
EK-2000i	2000 g x 0.1 g	External	5.2" x 6.7"
EK-3000i	3000 g x 0.1g	External	5.2" x 6.7"
EK-4100i	4000 g x 0.1 g	External	5.2" x 6.7"
EK-6100i	6000 g x 0.1 g	External	5.2" x 6.7"
EK-6000i	6000 g x 1.0 g NTEP Class III D= 1.0 g	External	5.2" x 6.7"
EK-12Ki	12,000 g x 1.0 g NTEP Class II D= 1.0 g	External	5.2" x 6.7"

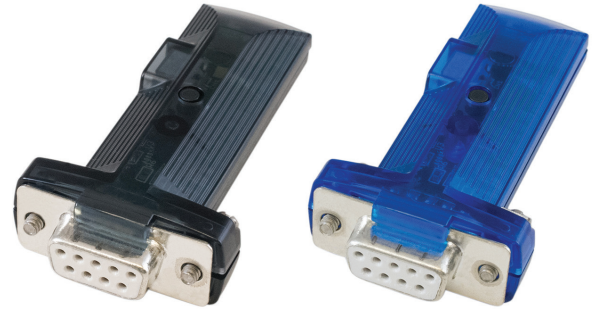
Balance Accessories



Static Eliminator

AD-1683A static eliminator, which incorporates a high-voltage power source, is a DC power-operated device which eliminates static electricity from charged objects without the need of an external high-voltage power source.

Part Number	Description
AD-1683A	Static Eliminator



Bluetooth Dongle

The AD-8529PC/PR-W Bluetooth converters enable wireless communication between a balance/scale and a PC/printer.

Part Number	Description
AD-8529PC-W	Bluetooth Converter for PC
AD-8529PR-W	Bluetooth Converter for Printer

Kasota Balance Tables

Balance table is made of natural cut stone quarried in Southern Minnesota. This stone has the density and vibration damping properties for most applications.

Part Number	Description
AD-1676	BM External Draft Enclosure
BT-3135	24" x 35" x 32" Balance Table/ hardware
BT-3136	20" x 15" x 3" Balance Slab

Note: BT models are drop-ship only.



Environment Analyzer and Data Loggers

Part Number	Description
AD-1687	Weighing Environment Logger
AD-1688	Weighing Data Logger (For A&D models with RS-232)
AD-1691	Weighing Environment Analyzer

High Capacity Balances



Traditional GP Series with NTEP Models

- Swing arm design or detached display and platform configurations.
- IP65 dust and water protection, aluminum and stainless steel construction, standard RS-232C interface.
- Automatic calibration prompted by temperature change, and user-initiated calibration with one touch of the CAL key.
- Application modes include Hi/Low comparator, accumulation function, counting, percent and dynamic weighing, weigh below and multiple weighing units. GLP, GMP and ISO compliant.
- Industry leading 5-year A&D warranty.
- Trade legal models: NTEP CoC 21-003 (shown in red).

Part Number	Description	Calibration Type	Pan Size
GP-12K	12 kg x 0.1 g	Internal	15.1" x 13.5"
GP-20K	21 kg x 0.1 g	Internal	15.1" x 13.5"
GP-32K	6 kg / 31 kg x 0.1 g / 1 g (Smart Range)	Internal	15.1" x 13.5"
GP-30K	31 kg x 0.1 g	Internal	15.1" x 13.5"
GP-40K	41 kg x 0.5 g	Internal	15.1" x 13.5"
GP-60K	61 kg x 1 g	Internal	15.1" x 13.5"
GP-61K	61 kg x 0.1 g	Internal	15.1" x 13.5"
GP-100K	100 kg x 1 g	Internal	15.1" x 13.5"
GP-102K	61 kg / 101 kg x 1 g / 10 g (Smart Range)	Internal	15.1" x 13.5"
GP-30KS	31 kg x 0.1 g (Remote Indicator)	Internal	15.1" x 13.5"
GP-32KS	6 kg / 31 kg x 0.1 g / 1 g (Smart Range, Remote Indicator)	Internal	15.1" x 13.5"
GP-60KS	61 kg x 1 g (Remote Indicator)	Internal	15.1" x 13.5"
GP-61KS	61 kg x 0.1 g (Remote Indicator)	Internal	15.1" x 13.5"
GP-100KS	101 kg x 1 g (Remote Indicator)	Internal	15.1" x 13.5"
GP-30KN	31 kg x 0.1 g, NTEP Class II e = 1 g	Internal	15.1" x 13.5"
GP-30KSN	31 kg x 0.1 g (Remote Indicator), NTEP Class II e = 1 g	Internal	15.1" x 13.5"

High Capacity Balances



GF-M Series

- External calibration. Fast response time with Smart Hybrid Weighing Sensor with a 1 second stabilization time.
- IP65 dust and water protection, die-cast aluminum base with standard RS-232C interface.
- Application modes include Hi/Low comparator, accumulation function, counting, percent and dynamic weighing, weigh below and multiple weighing units. GLP, GMP and ISO compliant.
- Industry leading 5-year A&D warranty.

Part Number	Description	Pan Size
GF-8202MD	2.2 / 8.2 kg x 0.01 / 0.1 g	10.62" x 8.26"
GF-8202M	8.2 kg x 0.01 g	10.62" x 8.26"
GF-10202M	10.2 kg x 0.01 g	10.62" x 8.26"
GF-12001M	12.2 kg x 0.1 g	10.62" x 8.26"
GF-22001M	22.2 kg x 0.1 g	10.62" x 8.26"
GF-32001M	32.2 kg x 0.1 g	10.62" x 8.26"
GF-32001MD	6.2 / 32.2 kg x 0.1 / 1 g	10.62" x 8.26"

GX-M Series

- Automatic internal calibration prompted by temperature change, and user-initiated calibration with one push of the CAL key.
- Fast response time with Smart Hybrid Weighing Sensor with a 1 second stabilization time.
- IP65 dust and water protection, die-cast aluminum base with standard RS-232C & USB interfaces.
- Application modes include Hi/Low comparator, accumulation function, counting, percent and dynamic weighing, weigh below and multiple weighing units. GLP, GMP and ISO compliant.
- Industry leading 5-year A&D warranty.

Part Number	Description	Pan Size
GX-8202MD	2.2 / 8.2 kg x 0.01 / 0.1 g	10.62" x 8.26"
GX-8202M	8.2 kg x 0.01 g	10.62" x 8.26"
GX-10202M	10.2 kg x 0.01 g	10.62" x 8.26"
GX-12001M	12.2 kg x 0.1 g	10.62" x 8.26"
GX-22001M	22.2 kg x 0.1 g	10.62" x 8.26"
GX-32001M	32.2 kg x 0.1 g	10.62" x 8.26"
GX-32001MD	6.2 / 32.2 kg x 0.1 / 1 g	10.62" x 8.26"

Moisture Analyzers



Classic M Series

- Fast and uniform halogen heating and uniquely designed “SRA” filter that avoids hot spots.
- High repeatability with Super Hybrid Sensor Technology.
- Calibration function for the heating temperature with optional AX-43 (for MS & MX).
- WinCT-Moisture displays moisture rate changes in a real time graphing. Calculates measurement data statistics.
- Five measurement programs, and four heating modes, memory function for save/recall test configurations.
- Industry leading 5-year A&D warranty.

Part Number	Description
MS-70	71 g x 0.0001 g (0.001% / 0.01% / 0.1% moisture content)
MX-50	51 g x 0.001 g (0.01% moisture content)
MF-50	51 g x 0.002 g (0.05% moisture content)
ML-50	51 g x 0.005 g (0.1% moisture content)

Comparison between MS-70 and the KF (Karl Fischer) method

Example of PET plastic pellet measurement

	Moisture rate		Average measurement time	Measurement conditions
	Average value	Repeatability (standard deviation)		
MS-70	0.298%	0.0045%	6.8 mins	Heating temperature 180°C Test sample 10g Measurements 5 times
KF method	0.307%	0.0065%	19.1 mins	Heating temperature 180°C Test sample 0.3g Measurements 5 times

KF method: a way of measuring moisture content through chemical determination

With PET plastic and other materials, the MS-70 can measure a drop of moisture content of less than 1%. Specialist knowledge is not necessary to operate the MS-70, and since measurement occurs quickly no harmful waste is produced.

Viscometers



SV Series

- Measurement of very low viscosities - down to 1/3 of water viscosity. Measurements possible on foaming samples, on foam itself, on flowing or agitated samples.
- Wide measurement range: 0.3 – 10,000mPa-s for SV-10, and 1,000 – 100,000mPa-s for SV-100.
- Fast measurements: 1st result within 15 seconds. Temperature measurement from 0 to 160°C.
- High precision with a repeatability of ±1% of displayed value. Includes WinCT-Viscosity software.
- Can measure directly in containers, beakers, product packages.
- 2-year A&D warranty.

Part Number	Description
SV-10	0.3 cP - 10,000 cP
SV-100	10 P - 1,000 P (1,000 cP - 100,000 cP)



SV-A Series

- Measurement of very low viscosities - down to 1/3 of water viscosity. Measurements possible on foaming samples, on foam itself, on flowing or agitated samples.
- Wide measurement range: 0.3 – 10,000mPa-s for SV-10, and 1,000 – 100,000mPa-s for SV-100.
- Fast measurements: 1st result within 15 seconds. Temperature measurement from 0 to 160°C.
- High precision with a repeatability of ±1% of displayed value. Includes WinCT-Viscosity software.
- Can measure directly in containers, beakers, product packages.
- 2-year A&D warranty.

Part Number	Description
SV-1A	0.8 cP - 1000 cP
SV-10A	0.3 cP - 10,000 cP
SV-100A	10 P - 1,000 P (1,000 cP - 100,000 cP)



RV Series

- Wide measurement range from 0.3 mPa-sec-25,000 mPa-sec.
- Simultaneous measurement of temperature and viscosity.
- Repeatability as high as 1% of the measured value even with low viscosity sample fluids.
- Quick measurement in only 20 seconds. Adjustable vibration amplitude allows changing of the shear rate. Measurement of liquids in motion. Simple user calibration.
- LCD Display with 7-inch, color touch-panel (RV-A). Includes WinCT-Viscosity software.
- 2-year A&D warranty.

Part Number	Description
RV-10000	0.3 cP - 25,000 cP with AD-1671A
RV-10000A	0.3 cP - 25,000 cP with touch controller, auto mode and AD-1671A

Pipette and Leak Testers

Pipette Accuracy Testers



- Compliant to ISO8655 for “gravimetric methods”
- Three models covering a wide volumetric range from 1µg to 1 mg.
- Fast response and stabilization times with Super Hybrid Weighing Sensor.
- Data evaluation and control of the balance with “WinCT-Pipette” software.
- 5-year A&D warranty.

Part Number	Description
AD-4212B-PT	110 g / 31 g / 5 g x 0.1 mg / 0.01 mg / 0.001 mg
AD-4212A-PT	110 g x 0.1 mg
FX-300i-PT	320 g x 1 mg
BM-14	Pipette Accuracy Testing Kit for BM Series
AD-1690	Pipette Leak Tester

Don't Forget About Our Product Inspection Systems!

Product Inspection protects consumers and brands through 100% inspection. By identifying contaminants, deformities and ensuring product quality and weight with our In-motion Checkweighers, Metal Detectors, and X-ray Systems companies can save on rework, recall, and wasted product and packaging materials. can be programmed to work specifically for your products. Features like masking, missing components and misshaped product detection and identify a variety of contaminants including bone, plastic, metal and glass come standard.



In-motion Checkweighers

If product giveaway and fill is of concern, checkweighers are an excellent solution. Our line of checkweighers are modular, easy to incorporate into your existing line, have a small footprint, and are efficient with the ability to process up to 400 pieces per minute! Pair with a rejector to automate the rejection process.



Metal Detectors

In facilities with metal machinery and risk of metal contamination, our metal detectors can detect ferrous, non-ferrous and stainless steel pieces as small as 0.2 millimeters that's smaller than a grain of sand! These metal detectors are stainless steel and wash down rated for easy cleaning and maintenance.



X-ray Systems

The ProteX X-ray series is a smart inspection system that can be programmed to work specifically for your products. Features like masking, missing components and misshaped product detection and identify a variety of contaminants including bone, plastic, metal and glass come standard.

For more information, visit us at andinspection.com



1756 Automation Parkway
San Jose, CA 95131
(800) 726-3364 or (408) 263-5333
andweighing.com